

YALE

→ PLANETARY SOLUTIONS



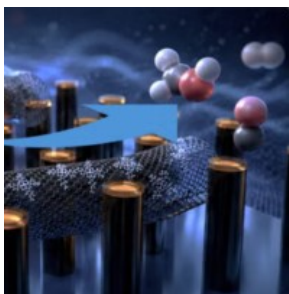
News

Meet the 2026-2028 Cohort of YPS Doctoral Fellows!



Twelve PhD students from across the university will receive the Stella M. Hammond Planetary Solutions Fellowship, building skills, community, and broader research horizons. The applicant pool was once again highly competitive, and selected students stood out for their passion for advancing solutions in climate, biodiversity, ecosystems, and society. [Read more.](#)

Growing a New ‘Leaf’ that Harnesses Sun, Water, and CO₂ to Make Liquid Fuel



A Yale-led research team has developed the first standalone device that produces the liquid fuel methanol using only sunlight, water, and carbon dioxide as the ingredients. The artificial “leaf,” like its namesake in nature, is a chemistry marvel, converting sunlight to methanol 32 times more efficiently than the previous conversion record for artificial leaf technologies that generate alcohol products. [Read more.](#)

Making Sustainability Stick: Yale Students Use Campus as a Change-Management Case Study



Yale’s long sustainability history makes the campus a useful place to study how institutions actually



change. The course, “Sustainability Implementation: Change Management in Institutional Settings,” is designed less as a survey of sustainability challenges than as a practicum in how large institutions decide, act, and—just as often—stall. [Read more.](#)

WATCH: How Yale is Reducing Energy Use in Museums and Collections Spaces



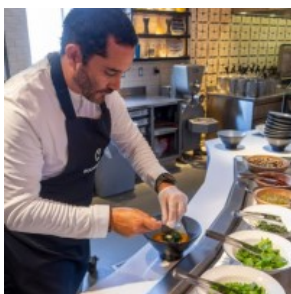
Museums and collection storage spaces are famously energy-intensive. To preserve artifacts, they often rely on strict, round-the-clock setpoints for temperature, relative humidity, and light. Across large buildings and multiple collections, those standards come with a steep energy cost—putting institutions in a constant tradeoff between sustainability goals and preservation needs. Yale’s Environmental Monitoring Data Project is taking on that challenge. [Watch the video.](#)

The Importance of Tracking Earth-System Methane Fluxes: Q&A with YCNCC Faculty Sparkle Malone



In late March, Yale Center for Natural Carbon Capture (YCNCC) Faculty and Yale School of the Environment (YSE) Assistant Professor Sparkle Malone co-authored a peer-reviewed article in *Science* on “A Global Methane Observation System to Track Climate Feedbacks for Verifiable Climate Impact.” YCNCC News recently sat down with Sparkle to discuss why better methane flux measurement is critical for climate mitigation. [Read more.](#)

Forest to Table: Chef Rodrigo Pacheco Brings Sustainable Culinary Vision to Yale



Ecuadorian chef Rodrigo Pacheco says he bears a responsibility that goes beyond preparing delicious food. He aims to use his culinary skills and creativity to promote sustainable cuisine and environmental conservation and generally be a force for positive change. During a weeklong residency at Yale, he shared his philosophy and cooking with the local community. [Read more.](#)

Can We Fix the Food System Emitting 2% of CO2? with Dr. Lea Winter



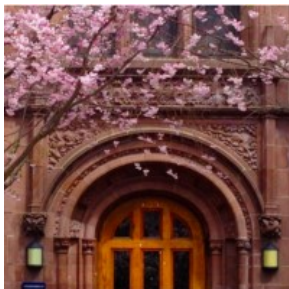
In this episode of Future in Bloom, host Steph Speirs,



YCNCC Leadership Team member, talks with Dr. Lea Winter to explore how we can redesign the basic chemistry of our economy and actually reuse CO₂. Lea breaks down why carbon isn't just a pollutant to get rid of, but an essential building block of our everyday lives. [Watch the interview.](#)

Opportunities

Planning a Large-Scale Federal Proposal?



The Yale Office of Research Development (YRD) partners with research teams to strengthen competitiveness for large-scale federal funding opportunities. YRD can provide strategic support for funding intelligence, research positioning, interdisciplinary team development and facilitation, large-scale proposal planning, narrative development, graphics, and proposal reviews. Faculty preparing for complex, collaborative, or high-impact proposals are encouraged to connect with YRD early in the process. Learn more, see our full support menu, or request support at researchdev.yale.edu.

Additional Opportunities:

[YCNCC is seeking a Program Manager, Coastal Resilience Lead. Interested applicants should apply ASAP!](#)

[Call for Papers: Toward a Psychological Study of Environmental Racism. Deadline: June 26](#)

[Environmental Data Science Certificate Program: Applications Due July 9](#)

[Yale Online Climate Change and Health Certificate Program for Working Professionals. Apply by August 17](#)

[Abstract Submissions are Now Open for "Integrating Scales in Planetary Biology." Submit by August 27!](#)

Upcoming Events

Neighborhood Swap Party
June 18, Whitehall Apartments

Yale-Myers Forest Summer Research Seminar Series
June 24, Virtual

Unlocking Forest Sector Innovation: The Practice and Potential Pathways to Scaling Up
Thursdays beginning September 10, Virtual

PLANETARYSOLUTIONS@YALE.EDU [UNSUBSCRIBE](#) [PRIVACY POLICY](#)

© 2025 Yale University

Yale

This email was sent by:

Yale University, New Haven, CT, 06520

%%[var @column1, @unsub_link, @var1, @url1, @eid, @mid SET @column1 =AttributeValue("group_name") SET @eid =AttributeValue("ContactSubscriberID__c") SET @mid =AttributeValue("memberid") IF Not Empty(@column1) THEN set @url1 = CONCAT("https://subscribe.yale.edu/unsubscribe?eid=',@eid, '&mid=',@mid,'&group=',@column1)]%%

Unsubscribe from this Mailing List

%%[ENDIF]%% Privacy Policy: <https://www.yale.edu/privacy-policy>

%%_OpenImageURL%%